



**WILLIAM JOHNSTON**  
& COMPANY LIMITED



**GPT**



Glasgow Tel: +44 (0) 141 620 1666 | Inverness Tel: +44 (0) 1463 238 673  
[sales@williamjohnston.co.uk](mailto:sales@williamjohnston.co.uk) | [www.williamjohnston.co.uk](http://www.williamjohnston.co.uk)

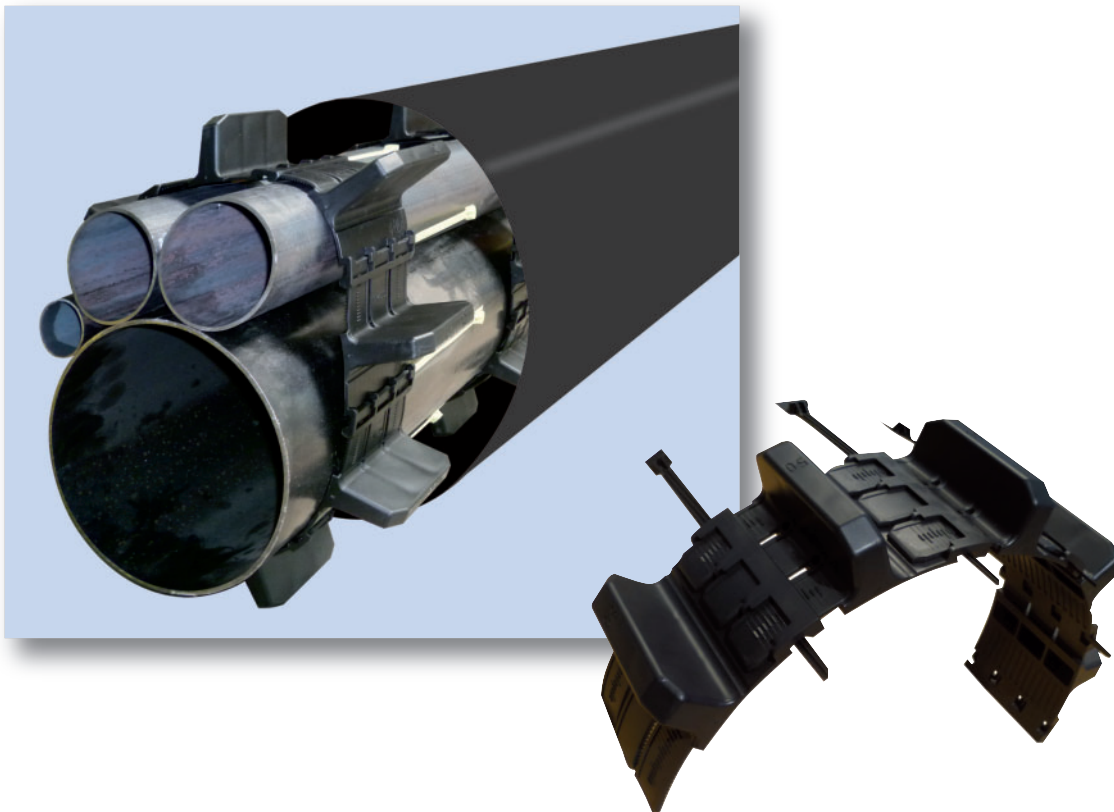
YOUR OFFICIAL UK DISTRIBUTOR FOR LINK-SEAL

## Pipeline Accessories

---



### PSI Insulators for Pipe Bundling



# PSI Insulators for Pipe Bundling

## The Boltless Plug-In Connection



PSI Insulators as boltless plug-in connection are suitable for pipe bundles and individual solutions. The flexibility of the insulator allows for extreme bends and the high number of skids provides the bearing and load distribution inside the casing pipe and towards the neighbor pipe in many situations.

### Advantages

- significant cost savings compared to steel insulator constructions
- easy and fast installation (example of use)
- individual solutions

PSI calculates individual solutions for your project. Use our experience.

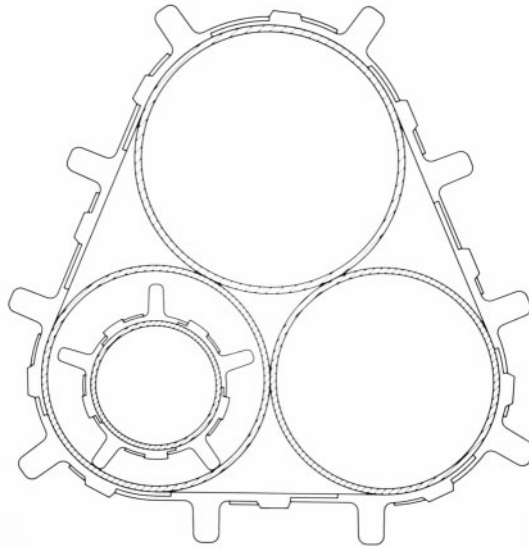
Call us. We will tell you which

- type of insulator
- how many elements and which
- skid heights

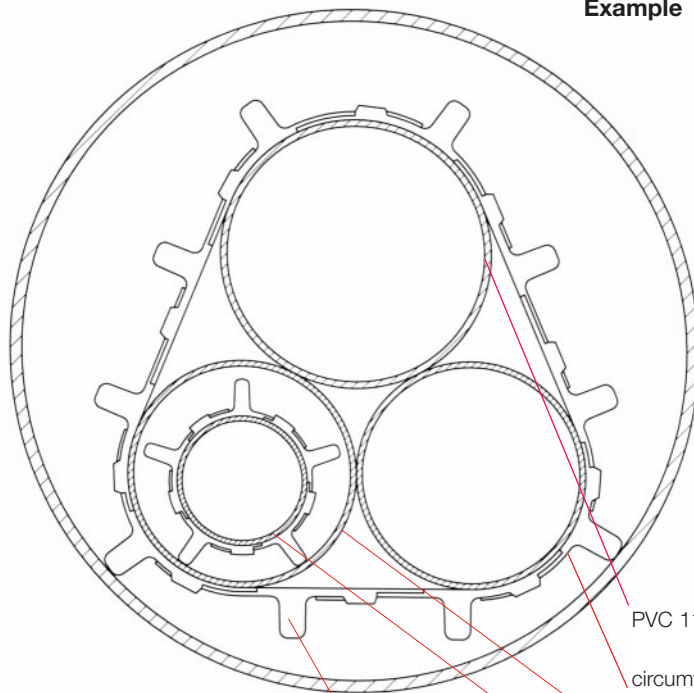
you need for specific applications and loads.

We expressly exclude any other use of the material. The PSI guarantee is restricted to faulty material. The suitability of the product for a special purpose must be tested by the user on his own responsibility.

Example

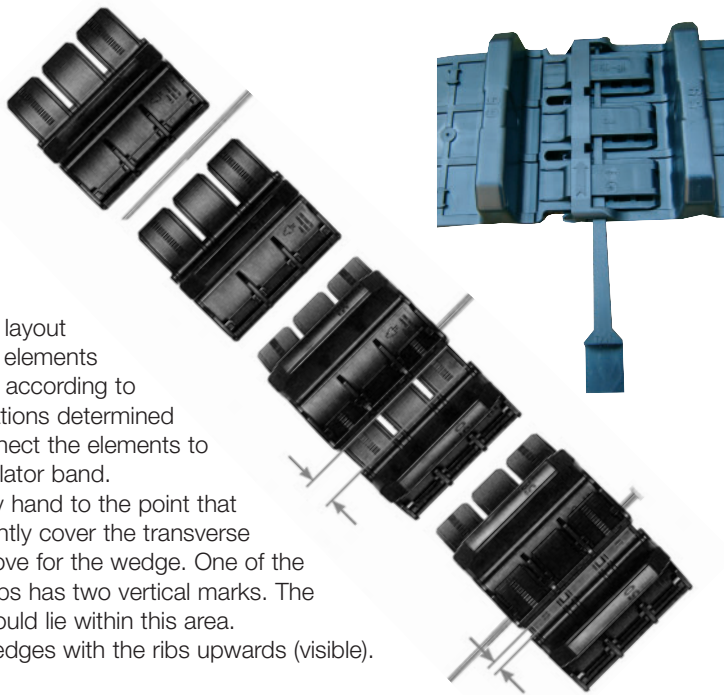


Example



- PVC 110 x 3,2 mm
- circumference 914 mm
- casing pipe CS DN 400
- carrier pipe PE-HD 90
- insulators PSI Ranger

# Mounting Instructions



Prepare and layout the insulator elements and wedges according to the specifications determined by PSI. Connect the elements to form an insulator band.

Assemble by hand to the point that the tabs slightly cover the transverse locating groove for the wedge. One of the protruding ribs has two vertical marks. The tab ends should lie within this area.

Insert the wedges with the ribs upwards (visible).

Place the tubes in the corresponding positions and fix using shear-secure-tape.

Fit the pre-assembled elements around the pipe and close the last segment. Push the insulator ring together by hand to the point that it lies on the pipe.

Push all the segments evenly together by hand, or where applicable by screw-clamp, up to the point that the ring fits loosely around the pipe.

The insulator ring can be tensioned with the wedges. If the wedges can be inserted completely, remove the wedge and reinsert one rib to the left. In each case, this allows another rib to be tensioned. This procedure can be repeated as required.

Strongly tension the wedges with light hammer blows so that the insulator sits securely and immovably on the pipe. All wedges must be tensioned.

### Attention:

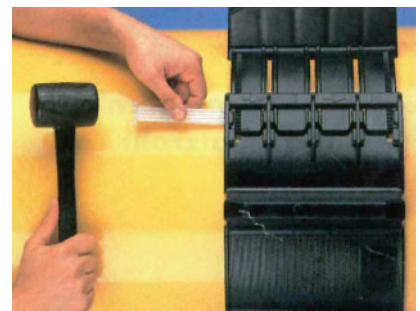
Please note the skid position of the individual insulator sections. These should be mounted to align with one another.

When fully assembled, all the wedges must be inserted so far that they are just visible on the segment opposite.

The wedges must not be hammered in as far as they will go, otherwise the maximum tension will not be achieved! If this is the case, several wedges should be withdrawn and moved one rib to the left to re-tension. Do not use brute force to hammer in the wedges; otherwise the danger exists that the interlocking ribs of the segment and wedge can jump out of mesh.

Please ensure that the segments are connected parallel with one another so that the wedge ribs interlock and slide correctly in the segments. The rings can be loosened without damage by hammering out the wedges and can be mounted again.

The PSI guarantee is restricted to the replacement of faulty material. The user is responsible for checking the suitability of the product for a specific purpose.



#### Disclaimer

Please note, failure to select the correct materials or products we supply (“the Products”) may result in damage to plant, equipment or property. In some instances, it may cause death or personal injury. We are not designers and do not give advice about design related matters concerning the Products. We can help and assist with the technical specifications for the Products. In specific applications, particularly where critical conditions exist, we will try to assist you within the limitations of the services that we offer. All information supplied by us is intended as technical co-operation outlining the specifications of the different Products which we supply. To the extent permitted in law, no warranty is given in respect of any information supplied by us. The customer must satisfy themselves as to the suitability of the Products for their intended application and use. The correct fitting of Products is the responsibility of the customer. Your statutory rights remain unaffected. Save in respect of death, personal injury or fraud, our entire liability to you, however arising from the supply of Products shall be limited to the £10M indemnity amount provided by our insurers.